

Duplo

from print to documents

GRAPHIC ARTS PRODUCT CATALOG

Duplo

DUPLOUSA.COM



YOUTUBE.COM/DUPLOUSA

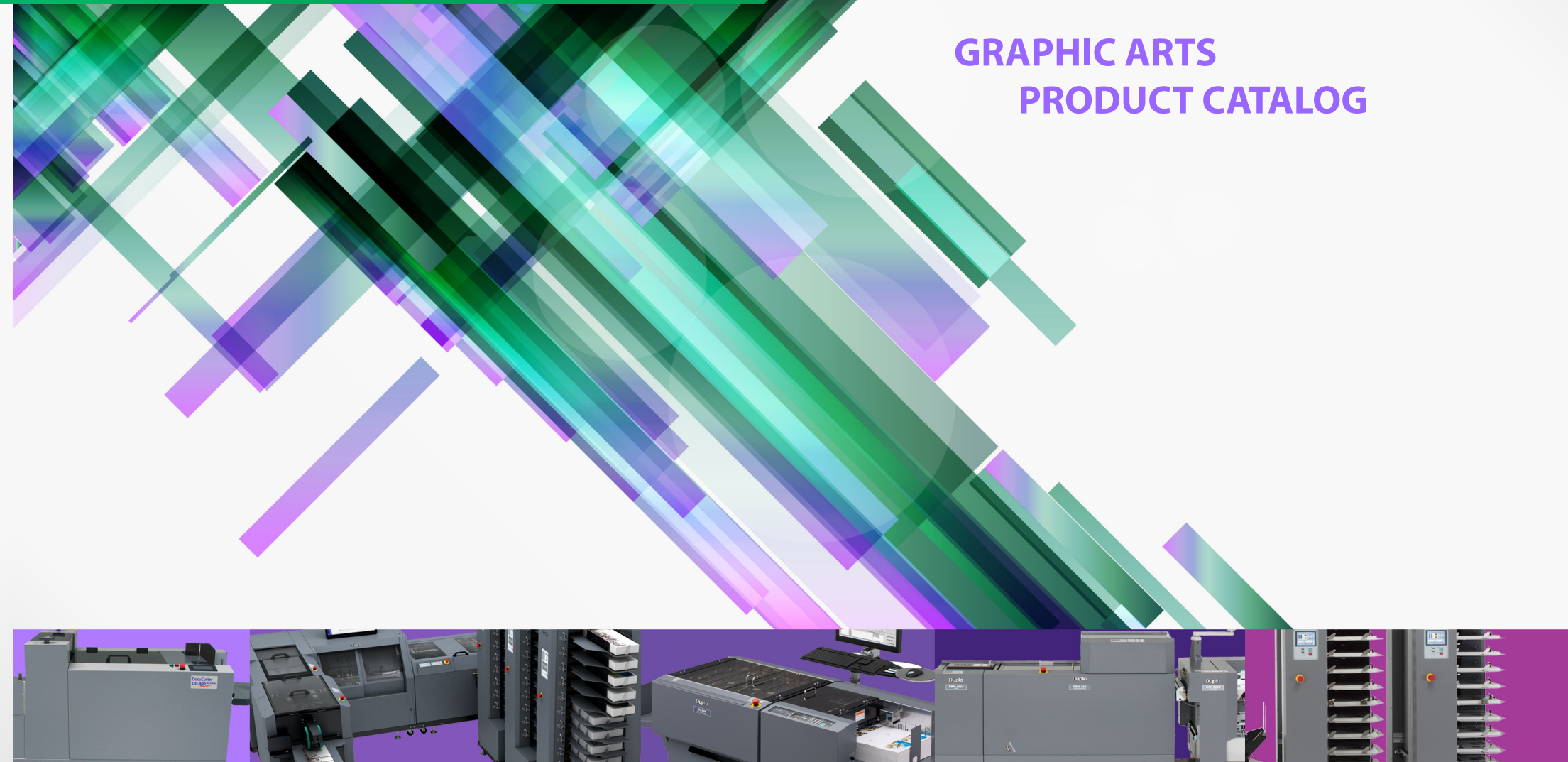


FACEBOOK.COM/DUPLOUSA



TWITTER.COM/DUPLOUSA

As part of our continuous product improvement program, specifications and descriptions in this catalog are subject to change without notice.
All rights reserved. No part of this document may be reproduced without permission of Duplo USA Corporation. All products are trademarks of their respective companies.



CONTENTS

2	Company Profile
3 - 4	Saddle Stitching System
5 - 7	Off-line Collating & Bookletmaking Systems
8	Specialty Bookletmaking Systems
9 - 10	Near-line Sheet Feeding & Bookletmaking Systems
11 - 14	Slitting/Cutting/Creasing Solutions
15	Die Cutting Solutions
16	UV Coating Solutions
17	Perfect Binding Solutions
18	Cutting & Folding Solutions

The Leader in Digital Color Finishing...



CUTTING & FOLDING

800 PRO/660 PRO/490 PRO HYDRAULIC CUTTERS

FEATURES

- Hydraulic-powered, rugged construction
- Stands up to rigorous workflow demands
- Standard light emitting and receiving safety sensors on front cutting table
- Special anti-friction surface, aluminum alloy cutting table

The 800 PRO, 660 PRO and 490 PRO/490 Hydraulic Cutters are built to last and guarantee both precision and speed in the critical cutting process. These quick and easy cutting solutions are reliable for meeting deadlines and offer pinpoint cutting accuracy to avoid expensive reprints. Their special low-friction surface aluminum alloy cutting beds require no polish or waxing and will not rust over the life of the cutters. To extend its capabilities, the 800 PRO, 660 PRO and 490 PRO are easily programmable via a color LCD touch screen control panel.



	800 PRO	660 PRO	490 PRO/490
Cutting Width	Up to 31.4"	Up to 26.5"	Up to 19.29"
Stack Height	Up to 4"	Up to 4"	Up to 3.14"
Memory	79 cuts, 500 job memory	79 cuts, 500 job memory	48 cuts, 98 job memory

DF-1200 AIR-SUCTION FOLDER

FEATURES

- Reliable air suction feed and air separation system
- Automatically detects standard paper sizes and adjusts fold plates for ease of operation
- Six standard folds including gate fold
- 625-sheet feed capacity

The Duplo DF-1200 Air Suction Paper Folder provides the perfect tabletop solution for folding offset and digitally printed documents. With a production speed of up to 260 sheets per minute, the DF-1200 utilizes Duplo's renowned suction feed technology to handle static build-up in digital print applications and also comes equipped with Optical Double Feed Detection to ensure personalized documents are folded one sheet at a time. Fully automated and quiet in operation, the DF-1200 is ideal for any office environment.



| DF-1200 |

DF-1200	
Speed	Up to 260 sheets/minute
Paper Size	4.73" x 7.17" - 12.24" x 18"
Paper Type	Bond, NCR, offset, cover stock, and coated paper
Paper Weight	52 - 230 gsm*
Paper Feed Capacity	Up to 625 sheets of 64 gsm

*Varies upon paper grain and fold type

PERFECT BINDING

DPB-500 PERFECT BINDER

FEATURES

- Produces up to 360 books per hour
- PUR model binds digital and coated stocks
- Single operator design for greater productivity
- Ideal for short to medium runs and variable data productions

The DPB-500 produces perfect bound books up to 360 books an hour and is ideal for short-run and variable data productions. Changing from one size to another is quick and easy as the side glue and scoring wheels, and cover positioning guide automatically move into the desired positions according to the thickness of the loaded book.

A PUR model is also available making it efficient for binding books printed on digital and coated stocks. The PUR glue provides a high pull-strength ensuring each page is firmly bound and can be opened flat without any risk of page detachment.



| DPB-500 |

DPB-500	
Book Block Size	4.72" x 4.72" to 14.17" x 12.6"
Cover Size	4.72" x 9.84" to 14.17" x 27.4"
Binding Thickness	Up to 2.01"
Cycle Speed	Up to 525 cycles/hour (up to 360 books/hour)*
Scoring	4 (up to 6 with optional wing score kit)
Suction Cover Feeder Pile Height	2.76"
Cover Stock Thickness	Up to 302 gsm
Options	Long conveyor; barcode kit; wing score kit

* Subject to operation mode and PUR usage

DB-290 PERFECT BINDER

FEATURES

- Produces up to 200 books per hour
- Easy, single operator job changeovers
- Creates perfect bound, tape bound and padded books
- Unique notching and milling for maximum glue penetration

Producing up to 200 books per hour, the DB-290 Perfect Binder is ideal for short-run applications. Innovative features include a dust extractor as well as new notching and milling blades which provide a more durable bind and additional glue penetration. The DB-290 also has tape binding capabilities and with a quick push of a button, can convert to a padding function where only the precise amount of glue is added for perfectly bound notepads.



| DB-290 |

DB-290	
Book Block Size	4.72" x 1.97" to 12.60" x 15.75"
Cover Size	Up to 12.6" x 33"
Binding Thickness	Up to 1.6"
Cycle Speed	Up to 360 cycles/hour (up to 200 books /hour)

COMPANY PROFILE

About Us

For over 65 years, Duplo has set the standard with some of the most innovative and reliable finishing products in the graphic arts industry and continues to lead the way with solutions that are automated, productive, and cost-efficient. Today, Duplo manufactures a complete line of print finishing equipment from all-in-one slitter/cutter/creasers, folders, and perfect binders to sheet feeding, bookletmaking, and saddle stitching systems for offset and digital printers in both high production and small office environments.

Our Mission

It is our mission to help keep print alive in a world where it can co-exist with the ever-changing channels of communication. Our tagline "from print to documents" states our purpose to turn paper into impactful presentations and enable the printer to carry the message to higher levels. We do this by providing solutions that help printers reach their full potential and take advantage of new opportunities in the markets they serve.

Our History

Established in Japan in 1951, Duplo takes pride in manufacturing one of the first duplicators in the industry. Dedicated to the development of technologically-advanced printing and finishing equipment, Duplo has rapidly expanded and now has a global presence through key distributors in Asia, the United States, and Europe. From developing leading-edge collating and bookletmaking systems for the traditional offset market, the company continues to evolve with the printing industry and today offers a comprehensive line of innovative, multi-functional finishers for the digital color market as well.

Duplo USA emerged in 1979, with headquarters in Santa Ana, Calif., and today also serves Canada and Latin America. The company distributes its products through an extensive network of authorized dealers in North, Central, and South America and has also built valuable relationships with key industry leaders, including Xerox, Canon, Hewlett Packard, Ricoh, and Konica Minolta to deliver the right print and finishing solutions to their customers.



Corporate Headquarter

Duplo USA Corporation
3050 South Daimler Street
Santa Ana, CA 92705
800.255.1933 TEL
www.duplousa.com



Distribution & Training Center

Duplo USA Corporation
100 Horizon Drive
Suwanee, GA 30024
770.831.8222 TEL



Distribution Center

Duplo USA Corporation
Ontario, CA

Duplo

SADDLE STITCHING

iSADDLE SYSTEM

FEATURES

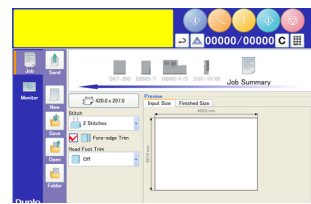
- Produces thicker, flatter books up to 30 sheets (120 pages)
- Ergonomically designed
- First in its class to produce letter landscape booklets
- Handles sheets up to 14" wide and 24" long

The iSaddle System is Duplo's heaviest-duty, high volume collating and saddle stitching system. With its ability to process 24" length sheets, the iSaddle System is the first in its class with the ability to produce the popular, letter landscape booklet. Designed to handle both traditional offset work as well as shorter-run digital jobs with equal ease and efficiency, the iSaddle combines PC-based programming and intelligent feeding with state-of-the-art scoring and folding to produce high quality, thicker and flatter books up to 120 pages.

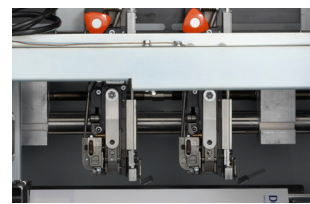
What's more, its modular design enables users to add three-knife trimming capabilities with the optional DKT-200 Two-Knife Trimmer, which can also process 2-up applications (48 pages or less), boosting its production up to 9,000 booklets an hour! Whatever your book production requirements are, the iSaddle System delivers the automation and precision needed, all on demand.

Intelligent Feed System

The DSC-10/60i PC Controller software comes standard with the Intelligent Multi Bin Feeding (IMBF) feature. This feature enables the operator to select which bins to feed from, and quickly set and change how many sheets to feed from each of the selected bins and in what sequence to feed them. The IMBF feature allows the DSC-10/60i to do more than just collate. It is an intelligent feeder that can be used for a variety of custom feed applications, including pre-collated digitally printed documents.

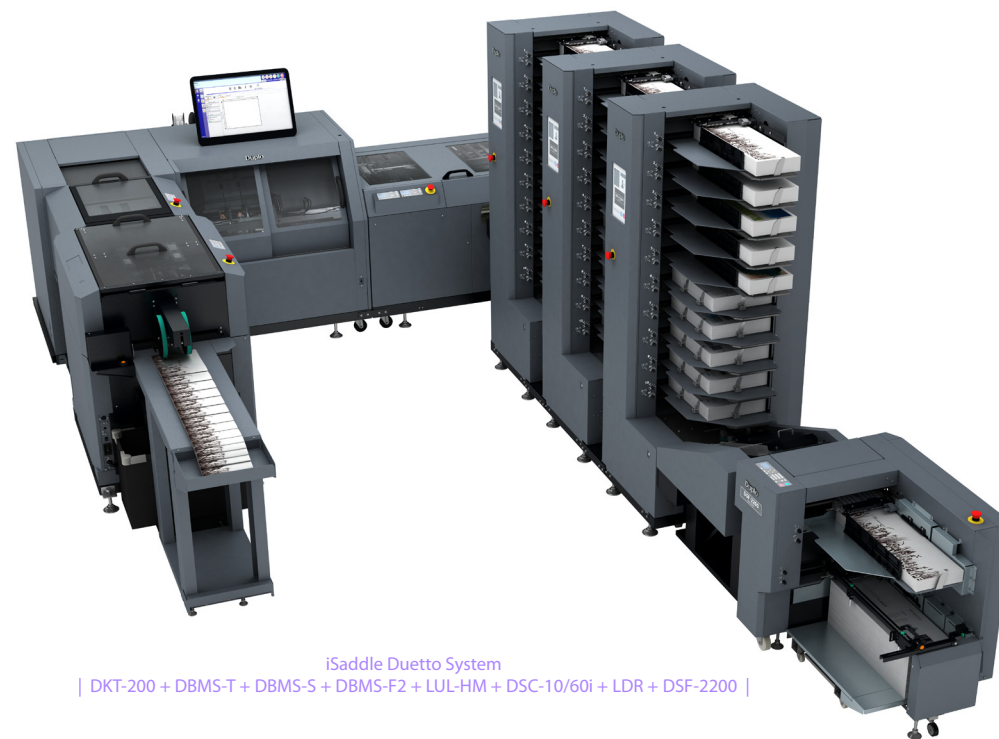


The user-friendly PC Controller software makes setup quick and easy.



The Hohner stitch heads automatically move into position when the job is recalled on the PC Controller. Optional 3-stitcher and 4-stitcher head kits are also available.

- Fully automated 60 second changeover. No tools required.
- State-of-the-art Intelligent Multi-bin Feeding (IMBF) for customized feeding sequences
- Optional DKT-200 Two-Knife Trimmer adds three-knife trimming capabilities and processes 2-up applications (48 pages or less), up to 9,000 books an hour



iSaddle Duetto System
| DKT-200 + DBMS-T + DBMS-S + DBMS-F2 + LUL-HM + DSC-10/60i + LDR + DSF-2200 |

UV COATING

ULTRA 300Ai UV COATER

FEATURES

- Ideal for offset and digital applications
- Processes up to 148 feet per minute
- IR heating system
- A bridge unit can be connected to any digital press to feed sheets directly into the UV Coater

Heavy duty yet simple to use, the Ultra 300Ai applies a high quality gloss, satin, or matte finish to a wide range of offset and digitally-printed applications, adding richness to its colors while protecting them from scratches and scuffs. Similar to other Ultra models, the Ultra 300Ai features innovative technology for coating both sides of the sheet with a smear-free finish. Print providers can offer double the value by coating both sides of applications, such as direct mailers, brochures, business cards, book covers, and more.

With the bridge unit, printed sheets are delivered directly into the UV Coater, increasing overall productivity. The adjustable bridge unit accommodates the heights of most digital presses. With a coating speed of up to 148 feet (45 meters) per minute, the Ultra 300Ai can accommodate the output speed from most digital presses and process a variety of paper sizes, from 8.5" x 11" up to 20" x 28", up to 350 gsm.

- Adds a high quality gloss, matte, or satin finish
- Ability to coat both sides (in two passes) of the sheet with a smear-free finish
- Full in-line integration with HP Indigo 7x00 Digital Presses
- Auto cleaning system

For near-line feeding, the Ultra 300A model is also available with the high capacity SF-300 Air Suction Feeder instead of bridge unit, and an optional pile feeder and pile stacker. High in automation and loaded with features, the Ultra 300Ai and Ultra 300A provide the ideal UV coating solution for any digital print environment!

ULTRA 300Ai	
Coating Speed	148 feet/minute
Paper Weight	200 - 350 gsm
Sheet Size	8.5" x 11 - 20" x 28" (hand-feed only)
Warm-up Time	UV lamp 90 seconds
Safety Certification	UL and CE certified



| Ultra 300Ai with HP Indigo 7x00 Digital Press |



| Ultra 300A with SF-300 Air Suction Feeder |

DIE CUTTING

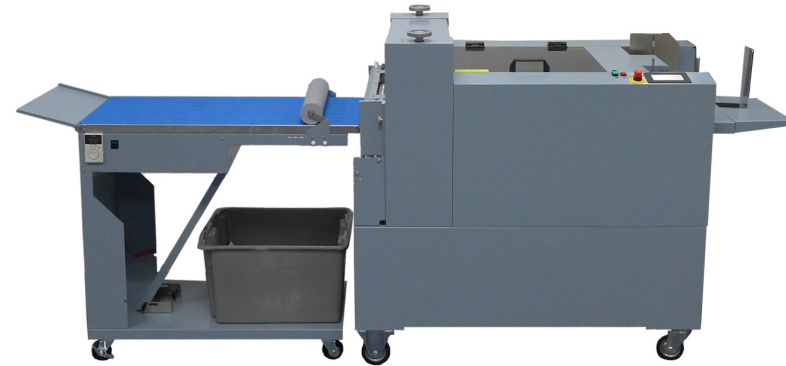
UD-300 DIE CUTTER

FEATURES

- Rotary magnetic cylinder die cutter
- Fast die changeover and set up time
- Processes 6,000 cycles per hour
- Processes 14" x 20" sheets at 3,000 sheets per hour

The UD-300 Die Cutter produces a variety of digital print and packaging products such as custom-shaped brochures and direct mailers, stationery, retail packages, labels, and folded boxes in quantities as low as one. Designed for use with flexible dies, the UD-300 performs multiple cuts, slits, slit-scores, kiss cuts, perforations, and window punches for single or multiple-up pieces on a wide range of paper stock up to 14" x 20" at 3,000 sheets per hour.

The UD-300 comes with a separator and conveyor unit to automatically remove the waste of each sheet. The photo-eye sensor ensures only the finished pieces are neatly stacked onto the conveyor for faster productivity.



| UD-300 with Separator + Conveyor |

UD-300	
Speed	6,000 cycles per hour, handles sheets up to 14" x 20" at 3,000 sheets per hour
Paper Weight	Min. 106 gsm, max. 400 gsm/ with separator: min. 200 gsm
Paper Size	Min. 8.267" x 11.693", max. 14.33" x 20.275"
Paper Loading Capacity	Up to 7.875"
Feed System	Air suction, top belt feeder
Substrates	Normal paper, coated paper, adhesive label

UD-M300 DIE CUTTER

FEATURES

- Hand-fed, rotary magnetic cylinder die cutter
- Fast die changeover and set up time

The UD-M300 Hand Feed Die Cutter produces a variety of digital print and packaging products such as custom-shaped brochures and direct mailers, stationery, retail packages, labels, and folded boxes. Designed for use with flexible dies, the UD-M300 performs multiple cuts, slits, slit-scores, kiss cuts, perforations, and window punches for single and multiple-up pieces on a wide range of paper stock up to 14" x 20" with affordable cost.

The UD-M300 features similar specifications as the UD-300 model plus a hand feed tray and fine tune adjustments for precise and accurate die cut applications. It also comes standard with a receiving tray, however, a separator and conveyor unit is available as an option.



| UD-M300 |

UD-M300	
Speed	Varies upon operator
Paper Weight	Min. 106 gsm, max. 400 gsm / with separator: min. 200 gsm
Paper Size	Min. 8.267" x 11.693", max. 14.33" x 20.275"
Feed System	Manual feed with tray start switch and foot pad
Substrates	Normal paper, coated paper, adhesive label
Options	Optional separator/conveyor unit available

SCORING AND FOLDING UNIT

The iSaddle accurately jogs and aligns each subset prior to scoring and plough folding to produce thicker, flatter and professional looking saddle stitched booklets up to 120 pages.

SADDLE STITCHING

The iSaddle is equipped with 2 heavy duty Hohner stitch heads. It also offers the option to have 3 or 4 stitch heads for 2-up bookletmaking.

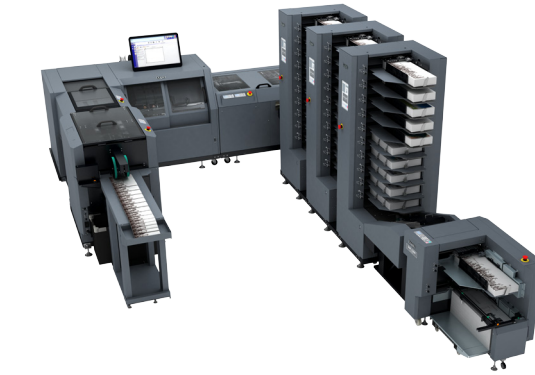
TWO KNIFE TRIMMING

The iSaddle, when connected to the optional DKT-200 Two Knife Trimmer, offers a fully automated solution that can trim the top and bottom of each booklet to produce full bleed professionally finished booklets in a single pass. By adding the optional gutter knife, the DKT-200 can also process and finish 2-up printed booklets which can double production up to 9,000 sets per hour.

ERGONOMIC DESIGN

The iSaddle's U-shaped ergonomic design is compact to allow a single operator to easily manage the system and production process.

ISADDLE CONFIGURATIONS



iSaddle Duetto System
Configured with DSC-10/60i + DSF-2200



iSaddle Pro Digital System
Configured with DSF-6000
and DSF-CFL Cover Feeder



iSaddle System
Configured with DSC-10/60i

ISADDLE WORKFLOW



OFF-LINE COLLATING & BOOKLETMAKING

600i BOOKLET SYSTEM

FEATURES

- High production collating and bookletmaking
- Configures the DSC-10/60i Suction Collator with a DBM-600 Bookletmaker
- Intelligent Multi-Bin Feeding (IMBF) function (only when using PC Controller software)
- Produces up to 5,200 books and stacks up to 10,000 sets an hour

The 600i Booklet System is Duplo's high production collating and bookletmaking system. Integrating the DSC-10/60i Suction Collators with the DBM-600 Bookletmaker, the 600i Booklet System produces saddle, side, or corner-stitched applications at a production rate of up to 5,200 booklets per hour.

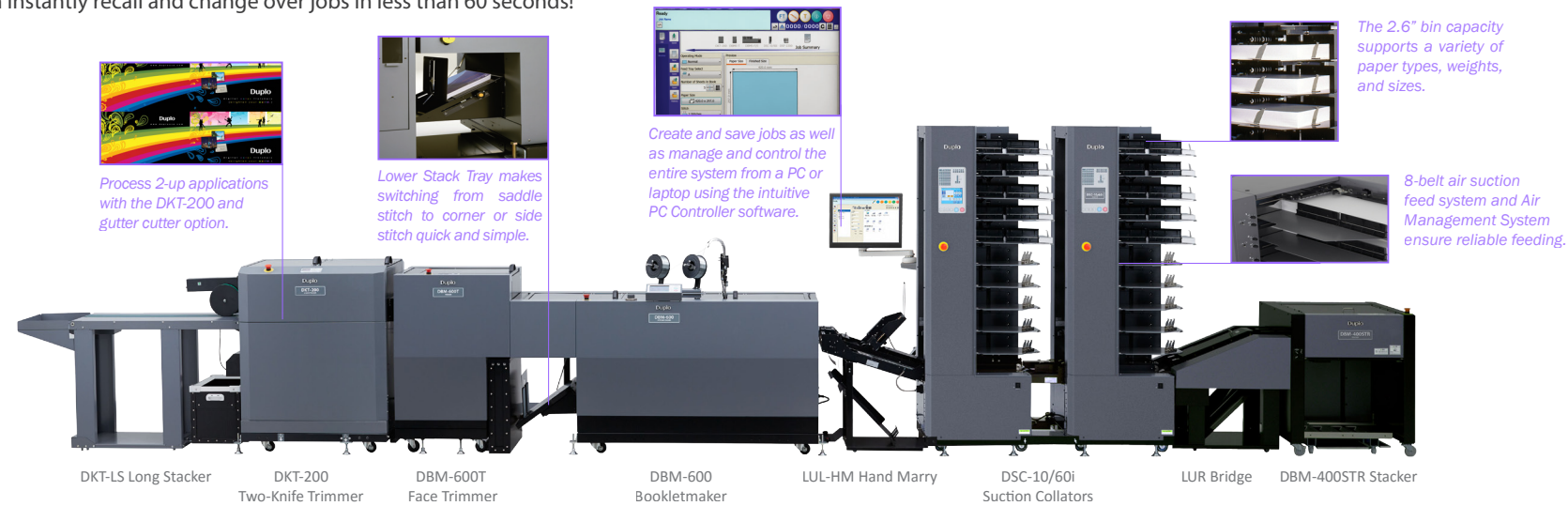
Ideal for both offset and digitally printed applications, the 600i Booklet System offers enhanced features for optimum efficiency and productivity. And by adding the optional 4-stitch head kit along with the DKT-200 Two-Knife Trimmer and gutter cutter, users can produce booklets with a full-bleed finish and process 2-up applications (48 pages or less), increasing production up to 9,000 booklets per hour!

Automatically change over from a catalog to a CD-size booklet in under a minute using the PC Controller software. The PC Controller makes it incredibly simple for operators of any skill level to operate, program new jobs, and manage the settings of the entire system. The intuitive software guides operators step-by-step throughout the process and gives them complete control over the job parameters and adjustments to allow them to precisely set the stitch, fold, and trim positions. And with the ability to store virtually an unlimited number of jobs in the hard drive, users can instantly recall and change over jobs in less than 60 seconds!

- Optional DKT-200 Two-Knife Trimmer can be added for full-bleed finish or add optional gutter cutter to process 2-up applications (48 pages or less), up to 9,000 books per hour

DSC-10/60i COLLATOR	
Number of Bins	10, 20, 30, 40, 50, 60 (10 bins per tower)
Bin Capacity	2.6"
Speed	Collating: up to 10,000 sets/hour ¹ ; Bookletmaking: up to 5,200 sets/hour ¹
Paper Size	Width: 4.1" - 14" Length: 5.8" - 24" ³
Paper Weight	52 - 300 gsm cover/52 - 157 gsm fine quality paper/79 - 157 gsm art coated paper
DBM-600 BOOKLETMAKER	
Speed	Up to 5,200 sets/hour ¹
Stitching Applications	
Corner/Side/Top	Paper Sizes: 4.72" x 5.52" - 13.82" x 14.33" Paper Capacity: Up to 30 sheets ²
Signature Bookletmaking	Paper Sizes: 4.72" (4.13" with accessories) x 6.7" - 14" x 25" Paper Capacity: Up to 25 sheets ²
DBM-600T TRIMMER	
Speed	Up to 5,200 sets/hour ¹
Booklet Size	4.13" x 3.35" - 14.33" x 12.6"
Trimmed Booklet Size	4.13" x 2.95" - 14.33" x 11.96"
Trim Margin	Up to 0.98" ²

¹Dependent upon connected devices and number of bins in use
²Dependent upon paper weight and size
³Note: Maximum paper length is 24"/610 mm only when the width is 7.88" - 9.05"/200 - 230 mm. If the width is more than 9.05"/230 mm, the maximum paper length is 24"/609.6mm



CREASING & CREASING FOLDING/PERFORATING

DC-446 CREASER

FEATURES

- Up to 20 creases in a single pass and up to 60 sheets per minute
- Fully automated setup
- Top air-suction feeding system with optional air knife
- Optional slitting and perforating modules available

Prevent toner cracking and unattractive fold lines with Duplo's DC-446 Creaser. A simple and affordable finishing solution no digital printer should do without, the DC-446 creases a wide range of applications at up to 60 sheets per minute. Creasing digitally-printed output prior to folding ensures a clean, professional finish and makes it easier for folding devices to bend with accuracy. The DC-446 applies up to 20 creases in a single pass with great precision and is perfect for creating unique accordion applications and other color documents that require a fold right along the color break. Fully automatic and easy to use, the DC-446 is ideal for finishing short-run offset and digital applications, including greeting cards, postcards, brochures, book covers, and more!



| DC-446 + optional stand |



DC-446	
Speed	Up to 60 sheets/minute
Paper Weight	110 - 350 gsm
Paper Size	5.5" x 5.9" - 13" x 26.4"
Tolerance	±0.3 mm
Creases	Up to 20
Options	Air knife; double-feed detection; slitters; perforation wheels; cabinet; IFS

CF375 & CP375 DUO TOUCHLINE

FEATURES

- High speed creasing & folding on CF375 and creasing & perforating on CP375 Duo
- Processes up to 6,000 sheets per hour
- Handles paper up to 400 gsm

The CF375 and CP375 Duo Touchline offer high-speed creasing solutions. Utilizing a variety of high quality tools for non-stop productivity, the CF375 and CP375 process a wide range of documents up to 6,000 sheets per hour. In addition, the CF375 offers folding capabilities while the CP375 Duo offers cross perforating capabilities – providing extended versatility for efficiency and productivity.



| CP-375 Duo |

	CF-375	CP-375 Duo
Speed	Up to 6,000 LTR per hour	Up to 6,000 LTR per hour
Paper Weight	100 - 400 gsm	80 - 400 gsm
Paper Size	4.13" x 5.82" to 14.76" x 39.37" (with optional extension table)	4.14" x 5.82" to 14.76" x 41.34" (with optional extension table)
Paper Loading Capacity	Up to 3.94"	Up to 7.09"
Number of Creases	Up to 20	Up to 20
Number of Folds	2	N/A
Number of Perforations	N/A	Up to 20

INTEGRATED FOLDING SYSTEM

INTEGRATED FOLDING SYSTEM FOR THE DC-746/646/446

FEATURES

- All-in-one slit/cut/crease/fold finishing solution
- Integrates an in-line knife folder with the DC-746/646/446
- Multiple-up processing

- Increased stacking capacity
- Folds paper weights up to 350 gsm

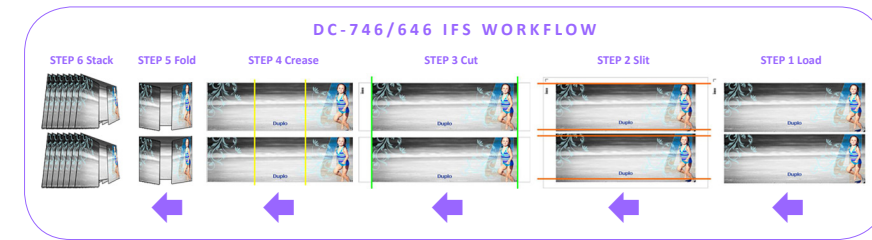
The Integrated Folding System incorporates an in-line knife folder with a DC series finishing device (DC-746/646/446) enabling its users to fold applications in one pass with a single system. Using two blades, the IFS folds the most common types including single, letter, Z, gate, and double parallel along with an infinite number of custom folds, and can also be bypassed for no fold applications. By incorporating folding into a single system operation, printers can now fully finish different applications.

DC-746/646 IFS

The Integrated Folding System further extends the capability of the versatile DC-746 and DC-646 digital color finishers enabling printers to slit/cut/crease/fold digitally printed applications in one pass.

DC-446 IFS

The DC-446 Integrated Folding System can slit/crease/perforate/fold sheets (slitting and perforating tools are optional).



POPULAR FOLD TYPES FOR IFS FOLDER



| DC-646 IFS |



| DC-446 IFS |

OFF-LINE COLLATING & BOOKLETMAKING

350 BOOKLET SYSTEM

FEATURES

- Mid-range collating and bookletmaking
- Configures the DBM-350 Bookletmaker with up to four DSC-10/60i Suction Collators
- Push belt transport system prevents marks and static build up

- Produces up to 3,000 books and collates up to 10,000 sets an hour
- Customizable with optional small booklet, side/corner stitch, and 6-page insert kits
- Collate and stack jobs by adding the optional DCR-ST Cross Stacker

The 350 Booklet System is Duplo's mid-range collating and bookletmaking system, integrating the DSC-10/60i Suction Collators with the DBM-350 Bookletmaker. With a production speed of up to 3,000 booklets per hour, the system produces a wide range of offset and digital print applications, from calendar and catalogs to brochures and newsletters, on demand. The 350 Booklet System provides the efficiency to deliver jobs in shorter turnarounds and its modular design offers users the flexibility to customize it according to their needs.

With a variety of finishing solutions in the market today, off-line collating continues to maintain significant advantages over in-line systems. Jobs processed on a collating and bookletmaking system are finished at much faster speeds and output from multiple printers can be accepted and finished with equal ease. Should the printer break down, an off-line finishing operation will continue to run without interruption.

The 350 Booklet System is very easy to use. Jobs can be quickly programmed and saved via the LCD control panel. Up to 20 jobs can be saved and recalled to allow for fast set-up and changeover, with little or no adjustment.

DSC-10/60i COLLATOR		
Number of Bins	10, 20, 30, 40, 50, 60 (up to 40 with 350 Booklet System)	
Bin Capacity	2.6"	
Speed	Collating: up to 10,000 sets/hour ¹ ; Bookletmaking: up to 3,000 sets/hour ¹	
Paper Size	Width: 4.13" - 14" Length: 5.8" - 24" ³	
Paper Weight	52 - 300 gsm cover/52 - 157 gsm fine quality paper/79 - 157 gsm art coated paper	
DBM-350 BOOKLETMAKER		
Speed	Up to 3,000 sets/hour ¹	
Stitching Applications		
Corner/Side/Top	Paper Sizes: 10.12" x 7.17" - 11.69" x 8.5"	Paper Capacity: Up to 30 sheets ²
Signature Bookletmaking	Paper Sizes: 5.82" x 8.27" - 12.6" x 18.11"	Paper Capacity: Up to 22 sheets ²
DBM-350T TRIMMER		
Speed	Up to 5,000 sets/hour ¹	
Booklet Size	5.82" x 4.13" to 12.6" x 9.06"	
Trimmed Booklet Size	5.82" x 3.35" to 12.6" x 9.06"	
Trim Margin	Up to 0.79" ²	

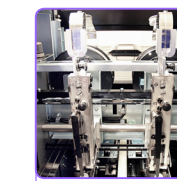
¹ Dependent upon connected devices and number of bins in use

² Dependent upon paper weight and size

³ Note: Maximum paper length is 24"/610 mm only when the width is 7.88" - 9.05"/200 - 230 mm. If the width is more than 9.05"/230 mm, the maximum paper length is 20"/508 mm



Produce flatter, square spine finish booklets with the DSS-350 Square Spine Module.



Deluxe Stitcher Head

DSS-350 Square Spine

DBM-350T Face Trimmer

DBM-350 Bookletmaker

LUL-HM Hand Marry

DSC-10/60i Suction Collators

LUR Bridge

DBM-400STR Stacker

OFF-LINE COLLATING & BOOKLETMAKING

350C BOOKLET SYSTEM

FEATURES

- Ideal for mid-production printers producing up to 3,000 booklets per hour
- Configures up to two DSC-10/20 Collators with the DBM-350 Bookletmaker
- Integrated Book Spine Compressor
- Heavy-duty Deluxe 26D Stitching Heads

Creating a perfect combination for productivity, value, and durability, the fully automated 350C Booklet System integrates up to two DSC-10/20 Suction Collators with the mid-range DBM-350/T Bookletmaker and Trimmer. The 350C Booklet System can be set up in under five minutes and can produce professionally-finished booklets at up to 3,000 booklets per hour.



DSC-10/20 COLLATOR	
Number of Bins	10 (10 bins per tower, up to 2 towers can be connected)
Bin Capacity	Up to 1.38"
Speed	Up to 7,200 sets/hour ¹
Paper Size	5.50" x 8.27" - 12.60" x 17.72"
Paper Weight	52.3 - 300 gsm
DBM-350 BOOKLETMAKER	
Speed	Up to 3,000 sets/hour ¹
Stitching Applications	
Corner/Side/Top	Paper Sizes: 10.12" x 7.17" - 11.69" x 8.5" Paper Capacity: Up to 30 sheets ²
Signature Bookletmaking	Paper Sizes: 5.82" x 8.27" - 12.6" x 18.11" Paper Capacity: Up to 22 sheets ²
DBM-350T TRIMMER	
Speed	Up to 5,000 sets/hour ¹
Booklet Size	5.82" x 4.13" to 12.6" x 9.06"
Trimmed Booklet Size	5.82" x 3.35" to 12.6" x 9.06"
Trim Margin	Up to 0.79" ²
Trimmed Booklet Size	5.82" x 3.35" - 12.6" x 9.06"
Trim Margin	Up to 0.79"
Paper Capacity	20 folded sheets of 81.4 gsm ²

¹Dependent upon connected devices and number of bins in use
²Dependent upon paper weight and size

600C BOOKLET SYSTEM

FEATURES

- Ideal for high volume printers producing up to 4,100 booklets per hour
- Configures a DSC-10/20 Collator with the DBM-600 Bookletmaker
- Automatic size changeover

Printers with higher production requirements will find the 600C Booklet System the ideal solution. Incorporating up to two DSC-10/20 Collators with Duplo's high-end DBM-600 Bookletmaker, this system produces up to 4,100 booklets per hour. Jobs can be saddle, side, or corner stitched and the automatic setup feature allows users to go from 14" x 20" to CD-size book jobs without any manual adjustments.



150C Booklet System

FEATURES

- Ideal for lower volume printers producing up to 2,400 booklets per hour
- Configures a DSC-10/20 Collator with the DBM-150 Bookletmaker

The 150C Booklet System integrates the DBM-150 Bookletmaker with up to two DSC-10/20 Collators. Equipped with the Isaberg Rapid stapler and staple cartridge, the DBM-150 Bookletmaker produces a high quality, flat staple every time. Compact in size and built-in with high performance features, the 150C Booklet System produces superior corner, side, or saddle-stapled applications up to 2,400 booklets per hour.



| DBM-150T | | DBM-150 | | DSC-10/20 |

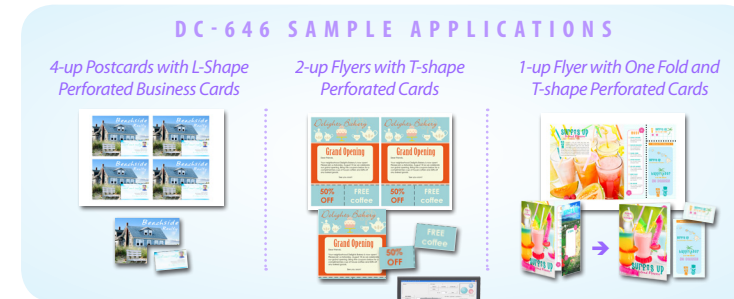
SLITTING/CUTTING/CREASING

DC-646 SLITTER/CUTTER/CREASER

FEATURES

- All-in-one finishing solution for mid-volume production
- Up to 8 slits, 25 cuts, and 20 creases in a single pass
- Standard PC Controller software and CCD scanner
- Optional rotary tool and cross perforating module

The Duplo DC-646 Slitter/Cutter/Creaser is Duplo's versatile digital color finisher providing printers the ability to create a multitude of unique full-bleed applications with more efficiency and flexibility. Performing up to 8 slits, 25 cuts and 20 creases in a single pass, the DC-646 eliminates white borders and prevents toner cracking on fold lines up to 30 sheets per minute and also offers optional rotary tool and cross perforating modules, both with strike-perforating capabilities, for increased versatility.



| DC-646 |

DC-646	
Speed	Up to 30 sheets/minute
Paper Weight	110 - 350 gsm
Paper Size	8.26" x 8.26" - 14.56" x 26.4"; minimum finished size 1.89" x 1.97"
Paper Type	Non-coated, coated
Slitters	6 slitters (2 margin, 4 center)
Tolerance	±0.2 mm
Optional Modules & Options	Rotary tool module; slitter module; cross perforating module; 48" long conveyor stacker; Integrated Folding System

0616A0

DC-616 PRO SLITTER/CUTTER/CREASER

FEATURES

- All-in-one finishing solution ideal for short-run jobs
- Up to 6 slits, 25 cuts, and 20 creases in a single pass
- Standard PC Controller software and CCD scanner
- Standard perforating unit

The Duplo DC-616 PRO Slitter/Cutter/Creaser is the perfect finishing solution for the short-run, on demand digital printer. Designed to remove white borders and prevent toner cracking on digital color documents, this all-in-one finisher can process up to 6 slits, 25 cuts, and 20 creases in a single pass - bringing efficiency and automation to your post-press operation. A base DC-616 model is also available and offers a variety of the DC-616 PRO features as options and can be configured according to a user's needs.



| DC-616 PRO |

DC-616 PRO	
Speed	Up to 10 sheets/minute
Paper Weight	110 - 350 gsm
Paper Size	8.26" x 8.26" - 13" x 26.37" ²
Paper Type	Non-coated, coated
Slitters	6 slitters (2 margin, 4 center)
Tolerance	±0.3 mm
Optional Modules & Options	Long paper tray

¹Certain change with the software and hardware setting is required
²Length can be increased to 670 mm when using optional long paper feed tray

SLITTING/CUTTING/CREASING

DC-746 SLITTER/CUTTER/CREASER

FEATURES

- Processes up to 50 sheets per minute
- Up to 10 slits, 25 cuts and 20 creases in a single pass
- Handles paper up to 350 gsm
- PC Controller software for easy job setup
- Reads barcodes and registration marks up to 40 sheets per minute
- Optional rotary tool and cross-perf modules with strike-perf capabilities

The DC-746 Slitter/Cutter/Creaser is Duplo's most powerful all-in-one digital color finishing solution and is the ideal companion for digital printers with medium to high production jobs. Performing up to 10 slits, 25 cuts, and 20 creases in one pass, this digital color finisher eliminates white borders and toner cracking on fold lines, producing professionally finished documents in a matter of minutes. The DC-746 comes equipped with a high capacity feeder, PC Controller software for easy job setup, and CCD scanner as well as offers optional rotary tool and cross perforation modules, both with strike perforating capabilities, for increased versatility. Produce 24-up and 36-up business cards, slit-score greeting cards, micro-perforated coupons, direct mailers with perforated cards, and much more!



DC-745	
Speed	Up to 50 sheets/minute
Paper Weight	110 - 350 gsm
Paper Size	8.26" x 8.26" to 14.56" x 26.4"; minimum finished size 1.89" x 1.97"
Slitters	6 rotary slitters (2 margin, 4 center)/ 2 optional slitters for a max of 10 slits
Slit/Cut/Crease Accuracy	±0.2 mm
Optional Modules	Rotary tool module; slitter module; cross perf module; 48" long conveyor stacker; Integrated Folding System

2-UP 5-PANEL ACCORDION CARD ON 12" X 18" APPLICATION WORKFLOW



SPECIALTY BOOKLETMAKING

DFS-3500 SYSTEM

FEATURES

- Configures a DC-446 Creaser with the DBM-350 Bookletmaker
- In-line creasing and slitting
- Integrated Book Spine Compressor
- Crease-only mode

Combining the creasing and slitting functions of the DC-446 Creaser with the stitching, folding, and trimming capabilities of the mid-range DBM-350 Bookletmaker, the DFS-3500 Bookletmaking System delivers an affordable all-in-one solution ideal for short-run applications.

Creasing the cover and innermost sheets prior to folding prevents toner cracking and guarantees crisp, professional folds. An optional slitting module can be added to trim the head and foot of each sheet for a full-bleed finish. The system also comes equipped with an integrated book spine compressor to create books with a lay-flat finish.

DFS-3500 WORKFLOW



150CR BOOKLETMAKING SYSTEM

FEATURES

- In-line slitting and creasing
- High-capacity, air suction feed system
- Produces up to 1,387 booklets per hour
- Easy job programming via user-friendly control panels

The 150Cr Booklet System is Duplo's compact, full-bleed bookletmaking system ideal for shorter volume demands. Incorporating the creasing and slitting functions of the DC-446 Creaser with the stapling, folding, and face trimming capabilities of the entry-level DBM-150S Bookletmaker and DBM-150T Face Trimmer, the 150Cr Booklet System automates the finishing process and produces up to 1,387 booklets per hour.

The 150Cr Booklet System eliminates the need for a guillotine cutter and creasing machine, reducing time consuming setups, wasted material, and turnaround times. With the ability to slit, crease, staple, fold and trim in a single pass, the 150Cr Booklet System offers an all-in-one solution for producing full-bleed calendars, catalogs, yearbooks, newsletters, and much more!

NEAR-LINE SHEET FEEDING & BOOKLETMAKING

600i PRO DIGITAL BOOKLET SYSTEM

FEATURES

- High production sheet feeder and bookletmaker
- Configures a DSF-6000 Sheet Feeder with a DBM-600 Bookletmaker
- 24" high capacity stacker
- Produces up to 4,500 booklets per hour

The Duplo 600i Pro Digital Booklet System connects the DSF-6000 Sheet Feeder with the DBM-600 Bookletmaker. Designed for customers with higher production demands, the DSF-6000 Sheet Feeder offers a high stacking capacity of 24" for maximum productivity and an increased flexibility with paper sizes. The system can process pre-collated digital or offset documents from multiple printers up to 600 sheets per minute. Duplo's proven belt suction feed system combined with its paper separation system provides consistent, dependable feeding. Its dual double feed detection system with optical and ultrasonic sensors ensures each sheet is fed with accuracy while the anti-static device further improves reliability.

With the DBM-600 Bookletmaker, jobs can be saddle, side or corner-stitched and the automatic set up feature allows users to go from 14" x 24" to CD-size book jobs without any manual adjustments. The 600i Pro Digital Booklet System produces up to 4,500 booklets per hour and the entire system is set up from a PC using the PC Controller software.



DSF-6000 SHEET FEEDER	
Speed	Up to 600 sheets/minute ¹
Bin Capacity	Up to 24.02"
Paper Size	4.73" x 8.27" to 14.33" x 20.66"
Paper Weight	64 to 300 gsm

¹Dependent upon paper size and connected devices

600i DIGITAL BOOKLET SYSTEM

FEATURES

- Mid to high production sheet feeder and bookletmaker
- Configures a DSF-2200 Sheet Feeder with a DBM-600 Bookletmaker
- Two trays feed covers and content separately
- Produces up to 5,200 booklets per hour

The Duplo 600i Digital Booklet System configures the DSF-2200 Sheet Feeder with the high volume DBM-600 Bookletmaker, creating a bookletmaking solution ideal for mid to large volume printers. The DSF-2200 comes loaded with a number of high-end features including Duplo's own belt suction feed system, front and side air separation, an anti-static device and ultrasonic double feed detection for enhanced feed reliability. It feeds up to 200 sheets per minute and offers a variety of options including a trail edge kit, pre-loading kit, and 1D & 2D barcode readers.

With the DBM-600 Bookletmaker, jobs can be saddle, side, or corner-stitched up to 5,200 booklets per hour and the automatic setup feature allows users to go from 14" x 20" to CD-size book jobs without any manual adjustments. Maximize productivity by adding the optional PC Controller to control the entire system from one convenient location.



DSF-2200 SHEET FEEDER	
Speed	Up to 200 sheets/minute A4 SEF
Bin Capacity	Bin A (Upper Tray): 2.56" (65 mm) Bin B (Lower Tray): 7.87" (200 mm)
Paper Size	4.13" x 7.87" to 14.02" x 20"
Paper Weight	Fine quality paper: 52.3 - 300 gsm

NEAR-LINE SHEET FEEDING & BOOKLETMAKING

350i DIGITAL BOOKLET SYSTEM

FEATURES

- Mid-production sheet feeder and bookletmaker
- Configures a DSF-2200 Sheet Feeder with the DBM-350 Bookletmaker
- Produces up to 3,000 booklets per hour
- Converts pre-collated sets into high quality booklets

The 350i Digital Booklet System is one of Duplo's near-line bookletmaking systems. Configuring the DSF-2200 Digital Sheet Feeder with the mid-range DBM-350 Bookletmaker, the 350i Digital Booklet System provides finishing for multiple printers and processes pre-collated digital or offset documents up to 200 sheets per minute, producing up to 3,000 booklets per hour.



DSF-2200 SHEET FEEDER	
Speed	Up to 200 sheets/minute A4 SEF
Bin Capacity	Bin A (Upper Tray): 2.56" (65 mm) Bin B (Lower Tray): 7.87" (200 mm)
Paper Size	4.13" x 7.87" to 14.02" x 20"
Paper Weight	Fine quality paper: 52.3 - 300 gsm

DBM-350 BOOKLETMAKER	
Speed	Up to 3,000 set/hour ¹
Paper Size Saddle Stitch & Fold	5.82" ² x 4.13" - 12.6" x 9.06"
Paper Size Side/Corner Stitch	10.12" x 7.17" - 11.69" x 8.5"

DBM-350 TRIMMER	
Speed	Up to 3,000 sets/hour ¹
Booklet Size	5.82" ² x 4.13" - 12.6" x 9.06"
Trimmed Booklet Size	5.82" ² x 3.35" - 12.6" x 9.06"
Trim Margin	Up to 0.79" ¹

¹Dependent upon connected devices and number of bins in use

²Dependent upon paper weight and size

150 DIGITAL BOOKLET SYSTEM

FEATURES

- Short-run sheet feeder and bookletmaker
- Configures a DSF-2200 Sheet Feeder with the DBM-150S Bookletmaker
- Produces up to 1,720 booklets per hour
- Converts pre-collated sets into high quality booklets

The 150 Digital Booklet System is Duplo's entry-level sheet feeding system connecting the DSF-2200 with the DBM-150S Bookletmaker. Featuring the Isaberg Rapid stapler and staple cartridge, the DBM-150 Bookletmaker produces up to 1,720 booklets per hour. Each cartridge holds 5,000 staples and wear parts are replaced each time the cartridge is changed out, providing a high level of reliability.



DSF-2200 SHEET FEEDER	
Speed	Up to 200 sheets/minute A4 SEF
Bin Capacity	Bin A (Upper Tray): 2.56" (65 mm) Bin B (Lower Tray): 7.87" (200 mm)
Paper Size	4.13" x 7.87" to 14.02" x 20"
Paper Weight	Fine quality paper: 52.3 - 300 gsm

DBM-150S BOOKLETMAKER	
Speed	Up to 1,720 set/hour ¹
Paper Size Saddle Stitch & Fold	4.72" x 8.27" - 12.60" x 18.11"
Paper Size Side/Corner Stitch	A4 LEF or LTR LEF
Paper Capacity (Stitch & Fold)	2 - 25 sheets max.

DBM-150 TRIMMER	
Speed	Up to 1,720 sets/hour ¹
Booklet Size	4.14" ² x 4.27" - 9.06" x 12.6"
Trimmed Booklet Size	3.35" ² x 4.27" - 8.27" x 12.6"
Trim Margin	0.04" - 0.79"

¹Dependent upon connected devices and number of bins in use